



Mark Twain National Forest, Eastern Region

OUTREACH NOTICE

Mark Twain National Forest

Ava, MO

“Caring for the Land and Serving People”



Forestry Technician (Timber Stand Improvement)

GS-0462-4/5/6/7

Duty Station: Ava, Missouri

Permanent Position Outreach

Date of This Notice: February 1st, 2022 Notice Valid Through: February 28th 2022

The Mark Twain National Forest may soon fill one (1) permanent Forestry Technician, GS-0462-4/5/6/7 position. The position will be located in **Ava, MO** on the Ava/Cassville/Willow Springs Ranger District.

To express interest in this position, please send your applicant information to James Cady, District Silviculturist, james.cady@usda.gov by COB 2/28/2022.

Major Duties

This position is located on the Ava/Cassville/Willow Springs Ranger District and performs Timber Stand Improvement activities, and reforestation activities. Performs reforestation and stocking surveys, determines planting needs, need for site preparation, and layout of silvicultural activities. Traverses using GPS and develops maps, collects technical data needed to prescribe stand treatments, measures tree basal areas, site index, stand density and stand conditions. Will serve as Contracting Officers Representative or inspector on contracts involving Timber Stand Improvement. Assist with the layout of timber sale areas, designation and cruising of trees for harvest, and the execution of the Forest Land Management plan to specific sites.

The ability to work well with others, good communication skills and a positive attitude and strong work ethic are highly desirable along with knowledge of forest measurement tools and techniques including the use of clinometer, map, compass, and prism.



Forest
Service

Mark Twain National Forest
1006 S. Jefferson, Ava, Mo 65608
Voice: (417) 683-4428 Fax: (417) 683-5722
www.fs.usda.gov/MTNF

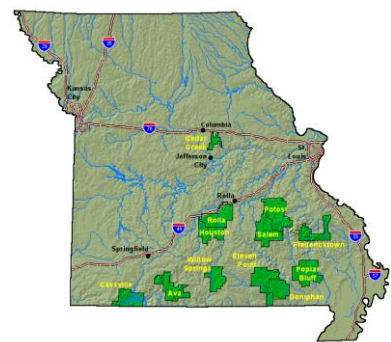
Performs other duties as assigned.

PHYSICAL REQUIREMENTS:

A physical capacity for working outdoors, in isolated areas is required. The work requires regular and recurring physical exertion related to conservation work requiring walking on rough uneven terrain, climbing steep banks, and jumping ditches and furrows. The duration of the activity contributes to the arduous nature of the job. Temperatures may range from very hot and dry to cool and extremely wet. Rain, snow, wind, or dust may be encountered. Work requires the use of safety equipment such as boots, gloves, goggles, and hardhats.

About the Forest:

The Mark Twain National Forest includes about 1.5 million acres of Federal lands in 29 Missouri counties. The Forest has 6 Ranger Districts, 7 Wilderness Areas, many Missouri Natural Areas, 2 National Trails, the Glade Top Trail National Scenic Byway, over 700 caves, and the Eleven Point and Lower Current National Scenic Rivers. It is within driving distance of several recreational lakes in Missouri & Arkansas, as well as to cultural and sports opportunities in St. Louis, Springfield, Columbia, and Kansas City, among others.



We are truly a working Forest as we accomplish a full range of vegetation and recreation management activities on the forest include timber harvest and regeneration activities, TSI, prescribed fire, developed and dispersed recreation, and mining.

Located in the Missouri Ozarks, the oldest mountain range in the country, the Mark Twain is comprised mainly of upland hardwoods and some associated shortleaf pine, with unique natural communities scattered throughout. Prehistoric & historic evidence of people in the Ozarks is common. The Trail of Tears winds its way through parts of the Forest, and we host the Remember the Removal riders each year as they pass by. For more about the Mark Twain National Forest, visit us on the [website @ http://www.fs.usda.gov/mtnf](http://www.fs.usda.gov/mtnf)

DISTRICT INFORMATION:

The **ACW Ranger District** covers approximately 320,000 acres of federal ownership. It is located in seven southwestern Missouri counties: Barry, Christian, Douglas, Howell, Ozark, Stone, and Taney.

A/C/W RD hosts 25 permanent fulltime positions. The district program of work includes management of the largest acreage of federally owned glades in the State of Missouri; management of three State Natural Areas; timber harvesting for utilization and other resource objectives; three recreation fee demo campgrounds (one of which connects to 85 miles of ATV and motorcycle trails), two day use



Forest
Service

Mark Twain National Forest
1006 S. Jefferson, Ava, Mo 65608
Voice: (417) 683-4428 Fax: (417) 683-5722
www.fs.usda.gov/MTNF

USDA is an equal opportunity provider, employer and lender.

areas, three National Forest scenic byways, one national recreation trail and many dispersed recreation opportunities. The program of work also includes the management of three Wilderness areas: Hercules Glades – 12,315 acres (Ava unit); Piney Creek – 8,142 acres (Cassville unit); and Devil’s Backbone – 6,595 acres (Willow Springs unit); special uses management is increasing with the emphasis in road access, recreation events, utilities and commercial outfitter and guide uses.

There are numerous non-recreational caves (currently under a Forest Closure Order) on the District and Forest, managed for various threatened, endangered, and sensitive species. An active heritage program exists on the A/C/W RD. It is rich in cultural resources including Native American, Civil War and Civilian Conservation Corps history.

Ecosystems on the District include cedar glade, oak, oak-pine, and pine forests, oak savanna, and open woodlands. The terrain ranges from the rough breaks and dissected hill country to the flat plains. Walking conditions can range from open park-like conditions to steep slopes with dense mid and understories.

ABOUT THE COMMUNITY:

Ava, Missouri has a population of approximately 3,000 and is in south central Missouri in the heart of the Missouri Ozarks in Douglas County (population est. 15,000). It is 60 miles southeast of Springfield, Missouri, 13 miles south of U.S. Route 60 and 60 minutes east of Branson, Missouri. Branson is just a stone’s throw from our units of Ava and Cassville. Ava is the Douglas County seat. It is a full-service community.

Recreation: Outdoor recreation opportunities abound and include fishing, hunting, hiking, nature watching, camping, mountain biking, and boating. Ava is 45 to 90 minutes from Table Rock Lake, Lake Taneycomo, and Bull Shoals lakes for boating and fishing. A municipal pool was recently built for the town of Ava and a private pool exists at the Ava Country Club. With a Parks and Recreation director Ava offers: playgrounds, Little League, , girls softball, Toss and Tee Ball, soccer, football, baseball; a 9-hole country club golf course (grass greens), tennis courts, indoor archery, a community skate park, and a new community fitness center. Ava is also the home of the Missouri Fox Trotting Horse Breed Association, which is the only place in the world where a fox trotter can be registered.

Industry: is primarily rural-agricultural with the emphasis of dairy farms, cattle ranching, sawmills, and small businesses. Copeland Manufacturing is Ava’s only large industrial plant.

Real estate: Homes in the Ava community and surrounding areas range from \$65,000 to \$200,000 plus; some include acreage. The majority are two-to-three-bedroom homes. Rental houses are difficult to obtain, rental rates are \$500 to \$850 per month plus utilities. There are four trailer parks in the area. Buildable land at reasonable prices is available.

Education: Education opportunities include public primary and secondary schools. In addition, Drury University and Southwestern Missouri State University have satellite extensions in Ava. The Ava High School has AAA classification and hosts a vocational education program. Douglas County Public Library is also located in Ava.

Medical: There are health care facilities in Ava however, the nearest hospitals and specialists are located an hour away in Springfield, West Plains and Branson, Missouri.



Forest
Service

Mark Twain National Forest
1006 S. Jefferson, Ava, Mo 65608
Voice: (417) 683-4428 Fax: (417) 683-5722
www.fs.usda.gov/MTNF

USDA is an equal opportunity provider, employer and lender.

Shopping: Facilities are better than average for a town of this size. Ava hosts a natural food store, Walmart, antiques stores, archery shop, and a variety of restaurants. In addition, Ava is approximately one hour from Springfield and Branson. Branson is world famous for musical shows and Silver Dollar City amusement park. There are four banks with full banking facilities and three full-service savings and loan establishments as well. Movie goers have access to one theater in Ava.

Churches: of many denominations can be found in Ava and the surrounding area. Civic organizations include: Lion's Club, Rotary, and Kiwanis Clubs.

Weather: summers average 85° F, however, occasionally temperatures reach 100° F and above in July and August. Winters have an average high temperature of 44 °F. Temperatures may drop below 0 degrees for short periods of time. Annual rainfall averages just over 44 inches.

For more information, check out the Ava Chamber of Commerce website, [Ava Missouri Area Chamber of Commerce](#) (hit Ctrl and click on this hyperlink to connect to the website).

How to Apply:

When available, the on-line application for this position will be accepted through USA Jobs at www.usajobs.gov. **You must apply on USA Jobs Be sure to indicate **Ava, MO** as the Duty Station when applying.**

Point of Contact:

For more information about this position, please contact James Cady, District Silviculturist, 417-683-4428 x113 or james.cady@usda.gov

In accordance with Federal civil rights law and U.S. Department of Agriculture (USDA) civil rights regulations and policies, the USDA, its Agencies, offices, and employees, and institutions participating in or administering USDA programs are prohibited from discriminating based on race, color, national origin, religion, sex, gender identity (including gender expression), sexual orientation, disability, age, marital status, family/parental status, income derived from a public assistance program, political beliefs, or reprisal or retaliation for prior civil rights activity, in any program or activity conducted or funded by USDA (not all bases apply to all programs). Remedies and complaint filing deadlines vary by program or incident.

Persons with disabilities who require alternative means of communication for program information (e.g., Braille, large print, audiotape, American Sign Language, etc.) should contact the responsible Agency or USDA's TARGET Center at (202) 720-2600 (voice and TTY) or contact USDA through the Federal Relay Service at (800) 877-8339. Additionally, program information may be made available in languages other than English.

To file a program discrimination complaint, complete the USDA Program Discrimination Complaint Form, AD-3027, found online at [How to File a Program Discrimination Complaint](#) and at any USDA office or write a letter addressed to USDA and provide in the letter all of the information requested in the form. To request a copy of the complaint form, call (866) 632-9992. Submit your completed form or letter to USDA by: (1) mail: U.S. Department of Agriculture, Office of the Assistant Secretary for Civil Rights, 1400 Independence Avenue, SW, Washington, D.C. 20250-9410; (2) fax: (202) 690-7442; or (3) email: program.intake@usda.gov.

USDA is an equal opportunity provider, employer, and lender.



Forest
Service

Mark Twain National Forest
1006 S. Jefferson, Ava, Mo 65608
Voice: (417) 683-4428 Fax: (417) 683-5722
www.fs.usda.gov/MTNF

USDA is an equal opportunity provider, employer and lender.

OUTREACH RESPONSE FORM
Eastern Region
Mark Twain National Forest
Forestry Technician (Timber Stand Improvement)

Please complete the information below and submit this form and an updated resume to:
 James Cady, District Silviculturist
james.cady@usda.gov

Respond by February 28th, 2022

NAME:	
E-MAIL:	
MAILING ADDRESS:	
PHONE:	

Agency:	<input type="checkbox"/> USFS	<input type="checkbox"/> BLM	<input type="checkbox"/> Other	<input type="checkbox"/> None		
Type of Appointment:	<input type="checkbox"/> Permanent	<input type="checkbox"/> Temporary	<input type="checkbox"/> Term	<input type="checkbox"/> VRA	<input type="checkbox"/> PWD	<input type="checkbox"/> Other
If applicable current Title/Series/Grade and Position Title:						
If applicable current Location (Region/Forest/District):						
Give a <u>brief description</u> of why you want the position:						



Forest Service

Mark Twain National Forest
 1006 S. Jefferson, Ava, Mo 65608
 Voice: (417) 683-4428 Fax: (417) 683-5722
www.fs.usda.gov/MTNF

USDA is an equal opportunity provider, employer and lender.